

User Manual

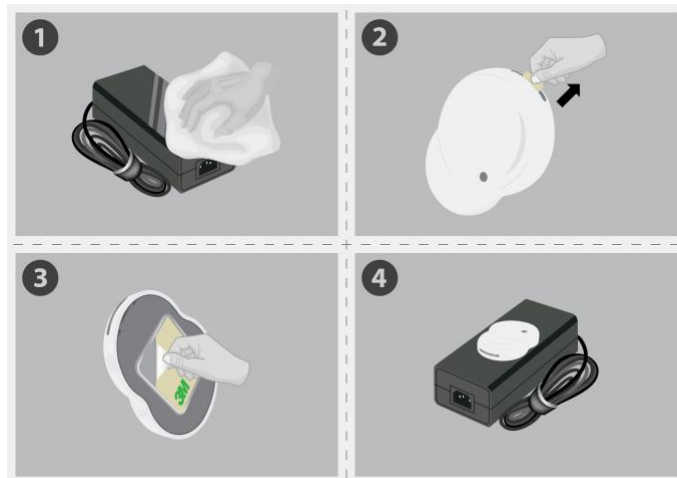
English

Safety Warning

- Firemole (the “Product”) is **not a fire alarm** and is not intended to alert users to the existence of a fire or the possibility of a fire occurring. The Company shall have no liability whatsoever in respect of any damage to property, death or personal injury resulting from a fire.
- The Product is intended to alert users to potentially unsafe temperatures (in excess of 60° Celsius or 140°F) being reached in the device to which the Product has been attached (the “Device”). A Device which has malfunctioned or which is not used in accordance with the manufacturer’s guidelines may experience sudden rises in temperatures. The Company gives no warranty that the Product will give a user sufficient warning of an increase in temperature of the Device to allow the user avoid damage to the Device or to other property or injury to any person. The Company shall have no liability whatsoever in respect of any damage to property, death or personal injury resulting from increases in temperature of Device to which the product is attached above 60° Celsius or 140°F.
- You are advised to read the Product Use Guidelines set out below carefully; the effectiveness of the Product is dependent on the Product being used as intended.

Product Use Guidelines

If the alarm sounds, the device to which the Product has been affixed should be turned off immediately. The Device should be powered off and disconnected from any power source and allowed to cool down. The Device should be checked by a suitably qualified technician to ensure it is working correctly before it is powered on again. Some user discretion is advised.



- Temperature is detected through the base, so The Product should only be attached to hard surfaces. The Product should not be attached to electronic devices that have thick protective covers on them.
- The Product operates on a 3v 2032 coin cell battery. The expected lifespan of the battery is 18 months from the date that the Product is first activated. The Product will beep every 5 minutes once the battery is running low. Once the Product begins to beep the battery should be replaced immediately.
- There is a test button on the Product which can be activated by using the tip of a pen or other thin implement. The Product should be tested monthly to ensure correct functionality. If the alarm does not sound after 5 seconds, the Product should be replaced.



- The Product emits a warning sound at 50dB max at a distance of 10 centimetres in the event that a temperature of 60 degrees Celsius or 140°F is reached. If there is no obstruction between the User and the Product, the warning sound will be ordinarily be audible for a range of 15 metres. The range of audibility will be impacted if the device is covered or if there are obstacles (doors, walls etc) between the Product and the User. Users who have impaired hearing may not be able to hear the Device within the normal range.
- To maintain the Product's sensitivity to heat, do not paint or cover the alarm in any manner and; do not allow cobwebs, dust or grease to accumulate.
- If the Product has been damaged in any way or does not function properly it should be replaced, do not attempt a repair.
- The Product is only intended for use on personal electronic devices and chargers and some electrical devices such as plug tops. It is not intended to be used on larger household devices such as washing machines, dishwashers, fridges or industrial devices of any kind. Firemole is not be used on appliance that are designed to get very hot (including, for example, kettles, hair straighteners, toasters, cooking appliances).

The Product should only be moved to another device if there is no damage to the adhesive pad or any dirt attached to it after removing it from the initial device. A new adhesive pad should be purchased from the Firemole.com website if there are any signs of damage or dirt on the adhesive pad.

- The Product detects temperature through the base of the unit. If the Product is placed on a Device with a large surface area, and the Device heats up in an area which is not near the Product, the alarm may not sound.
- The Product must be attached to a flat area the size of the tape (18mmx23mm) to ensure correct adhesion.
- Once Firemole detects a temperature over 60 degrees Celsius or 140°F, it sounds the alarm, the surface temperature of the Device to which it is attached to may be slightly hotter. Protective gloves should be used when handling the Device if the alarm has sounded.
- The Product is not a substitute for insurance. The Company is not your insurer.
- The Product should not be relied upon as a substitute for carrying out visual inspections of the Device and using the Devices in accordance with the manufacturer's instructions.
- While the Product is intended to warn the user if the Device has reached a temperature in excess of 60 degrees Celsius or 140°F, The Company excludes all and any liability for death, personal injury or damage to property resulting directly or indirectly from an increase in temperature in the Device beyond 60 degrees Celsius.
- Do not dispose of the Product in a fire.
- The Product, while loose, should be kept away from small children as it may pose a choking hazard.