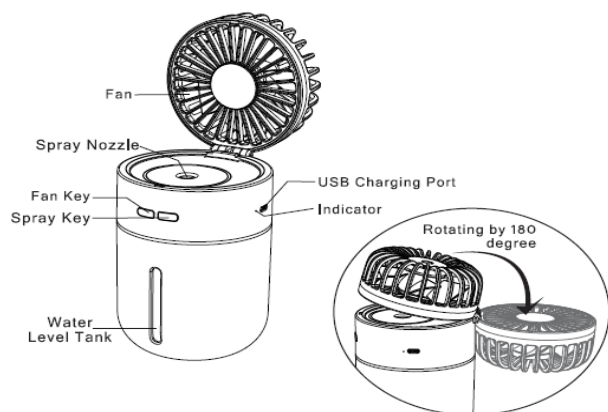


# Specifications USB Mini Fan with Air Humidifier GO-T9

Product name / Brand	LINUO
Type / Model	GO-T9
Art.-No. white	GO-T9W
Art.-No. Blue	GO-T9B
Art.-No. pink	GO-T9P
Product image / colors	
Product	USB rechargeable Mini Fan with Air Humidifier, portable
Use	ideal for office, home, workplace, travel, camping, caravan
Speed level	3 speed level (low, middle, high)
Mist function	with continuous and intermittent (alternating) mist mode and automatic shut-off function
Lighting	Night light with changing colors, can also be fixed to one color or turned off completely
Lenght of use	low, approx. 5 hours middle, approx. 3 hours high, approx. 1,5 hour
Charging time	3 hours
Rotatable body	Rotating by 180° degrees
Housing	robust housing with protective grille and silicone mats on base
Operation	Built-in rechargeable Lithium Battery, can also be used with the included USB cable
Battery	2000mAh (18650), Lithium Built-in Battery
Battery Voltage	3.7V
Working Voltage	DC5V / 1.5A
Working current	800mA
Power	2W
Tank Capacity	400 ml
Spray Capacity	35 ml / h
Charging	rechargeable with included USB charging cable via USB interface with any PC, notebook, powerbank or USB 2A adapter
Material	ABS / PP / Silica Gel / Electronic components
Motor speed	low-gear 5V / 0.2A / 2800rpm mid-gear 6.2V / 0.37A / 3400rpm high-gear 7.2V / 0.52A / 3800rpm
Delivery	1 USB Mini Fan with Air Humidifier GO-T9 1 USB charging cable, 1m 1 Replacement Cotton Swab 1 Instuction
Dimensions	94 x 90 x 157 mm
Dimensions Packaging Single Box	95 x 90 x 160 mm
Weight	296 gr
Weight incl. Packaging	366 gr
Cable lenght	1 meter
Master carton	48 pieces
Dimensions/Weight	Masse 58 x 40 x 36,3 cm, N.W. 18 kg / G.W. 19 kg
Manual	English, Chinese (Instructions in packaging) / German, English (online)
Warranty	1 year

EAN Code GO-T9W	7640117141079
EAN Code GO-T9B	7640117141086
EAN Code GO-T9P	7640117141093
HTS Code	8414.51.91.00
Origin	Shenzen, China
Classification / Standards	

RoHS     



## Operation Instructions

### Spray Key

Click for the first time to turn on the continuous spray; click for twice to turn on the intermittent spray (spray for 3 seconds and stop for 3 seconds); click for third times to turn off the spray mode. Press for the first time to turn on the colorful night light gradient; press for twice to fix color; press for third time to turn off the colorful light mode.

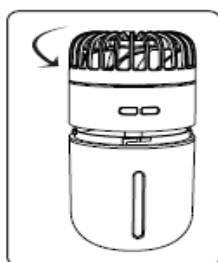
### Fan Key

Click for the first time to turn on the first gear; click for twice to switch to the mid-gear; click for third times to switch to the high-gear; click for four times to turn off the fan.

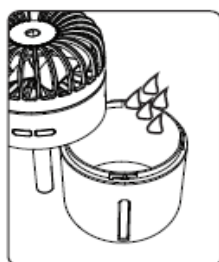
### Service Time with Full Charge

It will take about 3 hours to be fully charged; it can be used for about 5 hours at the low-gear, about 3 hours at the mid-gear, and about 1,5 hours at the high-gear.

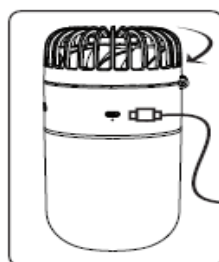
### Steps Display



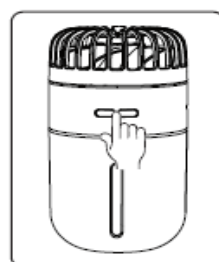
Rotate counterclockwise and unscrew the upper cover.



Fill the tank with water after turning on the upper cover.



Rotate clockwise and screw up the upper cover to connect the power supply.



Click the key and start to work.

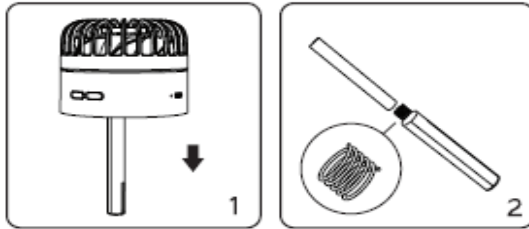
### Function of Indicator

Charging: Red light on / Fully charged: Red light off

### Maintenance

Please charge the product for more than 2 hours before use after bought.  
Charge every three months to avoid battery damage.

## Replacement of cotton



1. Put out the cotton swap tube to replace the cotton swab.
2. Pay attention to the bottom spring when replacing the cotton swab.

### **Attention!**

Please fill in water before use. Do not use humidifying function in case of water shortage.

Small amount of flavor is allowed and water-based aromatherapy water is recommended. No oily essential oil can be added to avoid oil blocking the function of atomizing blade.

The spray of this product is equipped with the function of automatic power off. When the spray time is up, the product will stop spraying automatically. If you want to continue to use, please observe the water in the tank first and then press the function key to start.

When cleaning the product, please do not rinse it directly under the faucet to avoid short circuit. It is recommended to wipe with a soft cotton cloth.

Do not put product into or near fire in order to avoid fire and explosion hazard.

This product can not be used alone for children.

### **Cleaning tip of the steam outlet (Spray Jet)**

Please do not use conventional and aggressive descaling agents. This will cause the connections, cables and electronics to corrode.

Do not pour water or liquids directly into the Spray Jet (steam emission). This will damage the electronics.

**TIP:** Only clean the Spray Jet with a little ordinary vinegar. Moisten a cotton swab with a little vinegar (not dripping wet) and carefully clean the platelet until there is no lime residue left. Works perfectly and the Spray Jet has its full steam power again. Clean the Spray Jet regularly and carefully to remove lime residue.